

EMBACOVER | Pallet cover

Embacover thermal pallet cover son fundas térmicas para cargas paletizadas. Está destinado a proteger la carga de daños irreversibles ocasionados por temperaturas y humedades extremas o bien para mantener la cadena de frío durante trayectos cortos contribuyendo además, al ahorro de huella de carbono al no utilizar energía.

Embacover thermal pallet covers are thermal liners for palletised cargo. It is designed to protect the cargo from irreversible damage caused by extreme temperatures and moisture or maintain the cold chain during short journeys also helping to reduce the carbon footprint by not using energy.



Estos son los principales beneficios del uso de las fundas térmicas de pallet Embacover:
These are the main use benefits of Embacover thermal pallet covers:

- Clientes satisfechos al mantener la calidad y evitar costosas reclamaciones
Satisfy customers and avoid costly claims
- Reduce los costes de transporte al viajar en sistemas sin refrigeración
Reduces transportation costs by travelling in unrefrigerated systems
- Protección térmica contra el calor
Thermal protection against heat
- Mantenimiento de la cadena de frío entre 24-72 horas
Maintenance of the cold chain from 24 to 72 hours.
- Protección contra la humedad
Moisture protection
- Contribuye a reducir la huella de carbono al no utilizar energía
Helps reduce the carbon footprint, given no power is required
- Reutilizables y económicos
Reusable and cheap
- Aislamiento contra insectos
Insect resistant insulation
- Reduce el riesgo de hurto de la mercancía
Reduce the risk of theft of goods
- Evita reclamaciones de cliente
Avoids customer complaints
- Fácil y rápida aplicación en 90 -120 segundos
Easy and quick application: 90-120 seconds
- Protección contra olores
Odour protection
- Protección contra suciedad
Dirt protection

Referencias / References

EMBACOVER AP3 PET-MET

| | |
|----------------|--|
| COVAP3PETSBA01 | EMBACOVER AP3 PET MET Sin/Without base 1200X1000X1200mm. |
| COVAP3PETSBA02 | EMBACOVER AP3 PET MET Sin/Without base 1200X1000X1600mm. |
| COVAP3PETSBA03 | EMBACOVER AP3 PET MET Sin/Without base 1200X1000X2000mm. |
| COVAP3PETBA | BASE-VELCRO EMBACOVER AP3 PET MET 1200X1000mm |
| COVAP3PETSBE01 | EMBACOVER AP3 PET MET Sin/Without base 1200X800X1200mm. |
| COVAP3PETSBE02 | EMBACOVER AP3 PET MET Sin/Without base 1200X800X1600mm. |
| COVAP3PETSBE03 | EMBACOVER AP3 PET MET Sin/Without base 1200X800X2000mm. |
| COVAP3PETBE | BASE-VELCRO EMBACOVER AP3 PET MET 1200X800mm. |

EMBACOVER FOAM

| | |
|--------------|---|
| COVFOAMSBA01 | EMBACOVER FOAM Sin/Without base 1200X1000X1200mm. |
| COVFOAMSBA02 | EMBACOVER FOAM Sin/Without base 1200X1000X1600mm. |
| COVFOAMSBA03 | EMBACOVER FOAM Sin/Without base 1200X1000X2000mm. |
| COVFOAMSE01 | EMBACOVER FOAM Sin/Without base 1200X800X1200mm. |
| COVFOAMSE02 | EMBACOVER FOAM Sin/Without base 1200X800X1600mm. |
| COVFOAMSE03 | EMBACOVER FOAM Sin/Without base 1200X800X2000mm. |

EMBACOVER AP4 PET-MET

| | |
|----------------|--|
| COVAP4PETSBA01 | EMBACOVER AP4 PET MET Sin/Without base 1200X1000X1200mm. |
| COVAP4PETSBA02 | EMBACOVER AP4 PET MET Sin/Without base 1200X1000X1600mm. |
| COVAP4PETSBA03 | EMBACOVER AP4 PET MET Sin/Without base 1200X1000X2000mm. |
| COVAP4PETBA | BASE-VELCRO EMBACOVER AP4 PET MET BASE-VELCRO 1200X1000mm. |
| COVAP4PETSBE01 | EMBACOVER AP4 PET MET Sin/Without base 1200X800X1200mm. |
| COVAP4PETSBE02 | EMBACOVER AP4 PET MET Sin/Without base 1200X800X1600mm. |
| COVAP4PETSBE03 | EMBACOVER AP4 PET MET Sin/Without base 1200X800X2000mm. |
| COVAP4PETBE | BASE-VELCRO EMBACOVER AP4 PET MET 1200X800mm. |

EMBACOVER 55

| | |
|------------|---|
| COV55SBA01 | EMBACOVER 55 PET MET Sin/Without base 1200X1000X1200mm. |
| COV55SBA02 | EMBACOVER 55 PET MET Sin/Without base 1200X1000X1600mm. |
| COV55SBA03 | EMBACOVER 55 PET MET Sin/Without base 1200X1000X2000mm. |
| COV55SBA | BASE-VELCRO EMBACOVER 55 PET MET 1200X1000mm. |
| COV55SBE01 | EMBACOVER 55 PET MET Sin/Without base 1200X800X1200mm. |
| COV55SBE02 | EMBACOVER 55 PET MET Sin/Without base 1200X800X1600mm. |
| COV55SBE03 | EMBACOVER 55 PET MET Sin/Without base 1200X800X2000mm. |
| COV55SBE | BASE-VELCRO EMBACOVER 55 PET MET 1200X800mm. |

EMBACOVER AP4 PLUS

| | |
|----------------|---|
| COVAP4PLUSBA01 | EMBACOVER AP4-PLUS Sin/Without base 1200X1000X1200mm. |
| COVAP4PLUSBA02 | EMBACOVER AP4-PLUS Sin/Without base 1200X1000X1600mm. |
| COVAP4PLUSBA03 | EMBACOVER AP4-PLUS Sin/Without base 1200X1000X2000mm. |
| COVAP4PLUSBA | BASE - VELCRO EMBACOVER AP4-PLUS 1200X1000mm. |
| COVAP4PLUSBE01 | EMBACOVER AP4-PLUS Sin/Without base 1200X800X1200mm. |
| COVAP4PLUSBE02 | EMBACOVER AP4-PLUS Sin/Without base 1200X800X1600mm. |
| COVAP4PLUSBE03 | EMBACOVER AP4-PLUS Sin/Without base 1200X800X2000mm. |
| COVAP4PLUSBE | BASE-VELCRO EMBACOVER AP4-PLUS 1200X800mm. |

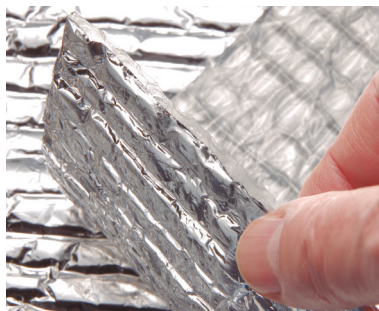
EMBACOVER 130

| | |
|-------------|---|
| COV130SBA01 | EMBACOVER 130 Sin/Without base 1200X1000X1200mm. |
| COV130SBA02 | EMBACOVER 130 Sin/Without base 1200X1000X1600mm. |
| COV130SBA03 | EMBACOVER 130 Sin/Without base 1200X1000X2000mm. |
| COV130SBA | BASE-VELCRO EMBACOVER 130 1200X1000mm. |
| COV130SBE01 | EMBACOVER 130 Sin/Without base 1200X800X1200mm. |
| COV130SBE02 | EMBACOVER 130 Sin/Without base 1200X800X1600mm. |
| COV130SBE03 | EMBACOVER 130 Sin/Without/Without base 1200X800X2000mm. |
| COV130SBE | BASE-VELCRO EMBACOVER 130 1200X800mm. |

* Disponibilidad de todo tipo de medidas bajo demanda / Customised sizes under on request

EMBACOVER | Pallet cover

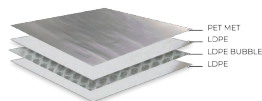
AP3 PET-MET



Protección/Protection:



Composición/Composition



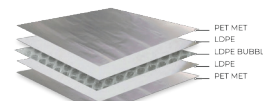
AP4 PET-MET



Protección/Protection:



Composición/Composition



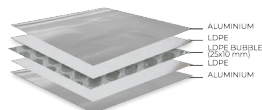
AP4 PLUS



Protección/Protection:



Composición/Composition



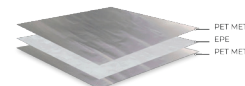
FOAM



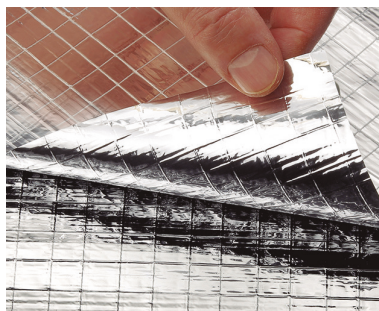
Protección/Protection:



Composición/Composition



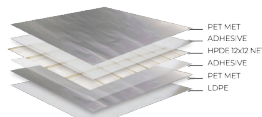
55



Protección/Protection:



Composición/Composition



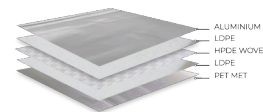
130



Protección/Protection:



Composición/Composition



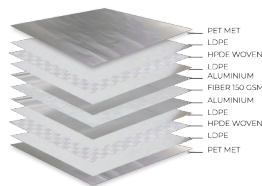
PLUS F150 (*)



Protección/Protection:



Composición/Composition



PLUS F300 (*)



Protección/Protection:



Composición/Composition

